

1. INTRODUCTION

Cashpower Gemini Compact Split Meter is a compact, split electricity meter that may be operated in any one of three modes for maximum flexibility:

- Prepayment Metering mode.
- Credit Metering mode.
- Energy Management Mode.

Gemini CSM is essentially a two-part product comprising:

- An Energy Management Unit (EMU) – also referred to as a ‘meter’
- A Customer Interface Unit (CIU)

The meter is typically mounted in a secure location, only accessible to the supply authority, and implements all critical metering, token decryption and load control functionality.

The customer interface unit resides in the consumer’s premises and provides a remote control and display interface (keypad and liquid crystal display). It is connected to the meter via a two-wire interface that cannot influence operation of the meter in any way e.g. by tampering with the wires.

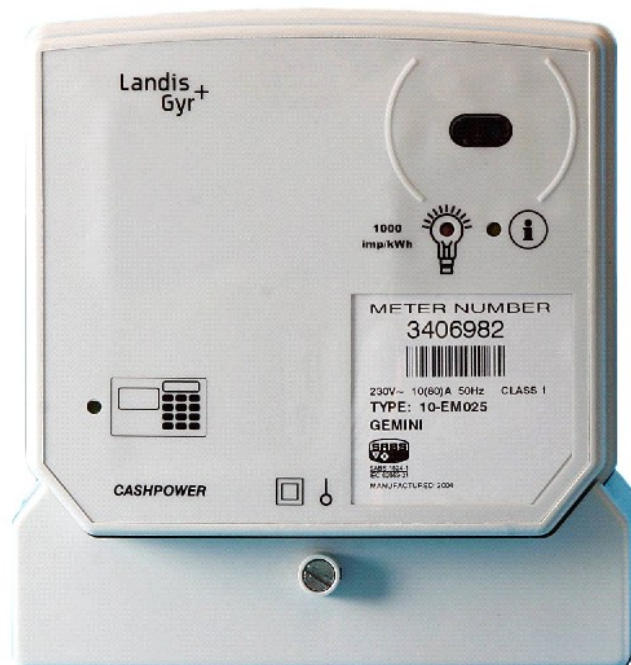


Figure 1: Gemini Split Prepayment Meter

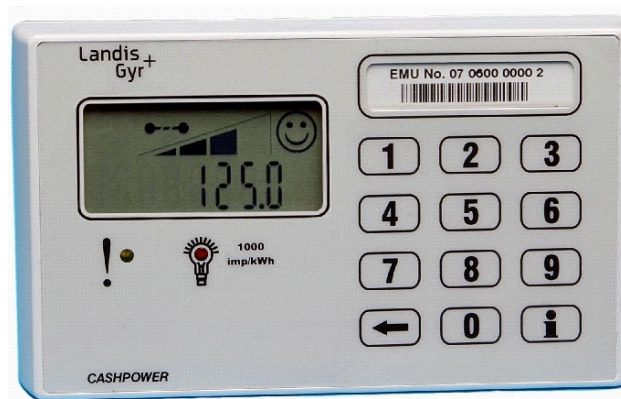


Figure 2: Customer Interface Unit